

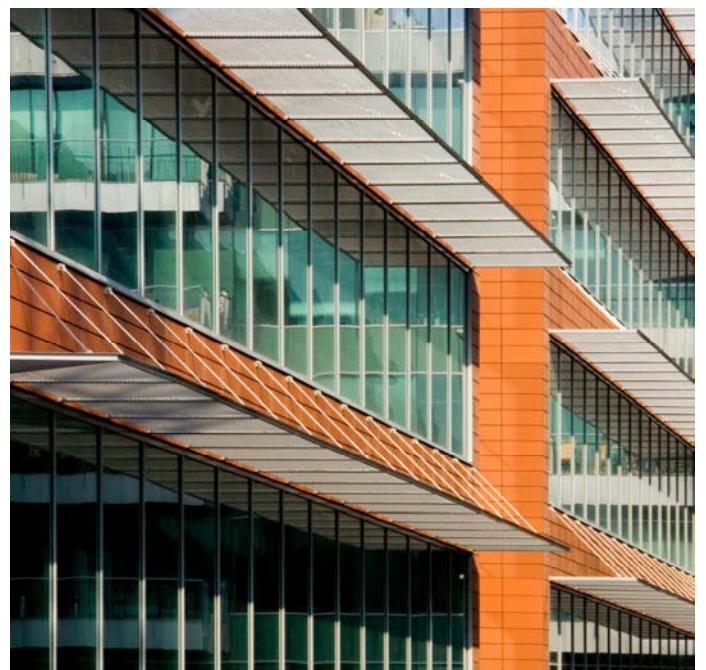


BUCHAREST BUSINESS PARK

Class A Offices

Architect:	Adest Architecture
Location:	Bucharest, Romania
Total gross area	35,000 sq-m
Client:	Portland Trust
Services:	Architectural Design
Status:	Completed in 2005
With:	Alpha Studio Architects

Bucharest Business Park is located in close vicinity of The Press House. The ensemble is a functional typological model of business park: high quality office building, with a small height ratio, within an open composition, set on a generous land. The architectural definition of the ensemble is simple and coherent, with full-gap string-courses of terracotta cladding alternated with green strips, protected by sun blinds. The project took advantage of a landscaping project in order to offer a pleasant commercial architecture and an agreeable working space.



www.adept.ro

adept[®]
ARCHITECTURE